



### *Gulliver's Corner*

Hi Everyone. It's hard to believe that September is already upon us! The mornings are cool and crisp, making all of us in the big yard almost as wild and crazy as those kids in the goofy group! Smiley came in from his ride on the purple bus, and said that he saw several big yellow school busses bringing kids to school. As classes have started up for the year, we see a bit less of some of our staff folks. Georgina is back to school, and spending time working on her acting skills. We still get to see her though, on the weekends. Over the summer the big yard adopted Georgina from the little dogs, and it is great fun to have her around. We also see less of our digging expert, Mike B. He is back in class at UVM. Adam is in College in Boston, and our freshman friends Lucy and Rachel went off together to a school in Florida. Despite seeing less of these wonderful people, things around here are happy as ever! We have new employees Sam, Caytee and Katlin to keep us busy. It takes us dogs in the big yard no time at all to have our yard people trained. And of course, we have our steadfast veteran staff to hang out with, like Mike H., Lisa, Shauyne, Luke and Sue, to name a few of them. We also get to see old friends back after spending the summer at home with the kids. New dogs too, have come to play. Otis moved all the way from Alaska. He is a greyhound x Alaskan husky mix. His mom says he looks like something created by Jim Henson, and I think she might be right. Puppet or not, we get along great!

### *Yuck! What is Demodectic Mange?*

Demodectic Mange (aka. Demodex, red mange, or puppy mange) is caused by a microscopic mite called Demodex canis, this parasite is shaped like an alligator with 8 legs. Cute huh? It may surprise you that mites are a normal resident of a dog's skin and your own!



**SAY CHEESE!**

Whether or not Demodex produces symptoms depends on the animal's ability to keep the mite under control. Demodex is usually an ailment of young dogs that have inadequate or poorly developed immune systems or older dogs that are suffering from a depressed immune system. The lesions and signs of demodectic mange usually involve hair loss, crusty, red skin, and at times, a greasy or moist appearance. The hair loss is usually localized, seen around the eyes and facial region or it may be generalized, with hair loss in many areas of the body. These symptoms are very similar to those of Sarcoptic Mange, which unlike demodex is highly cont'd...

# DOGBITS Gulliver's Doggie Daycare

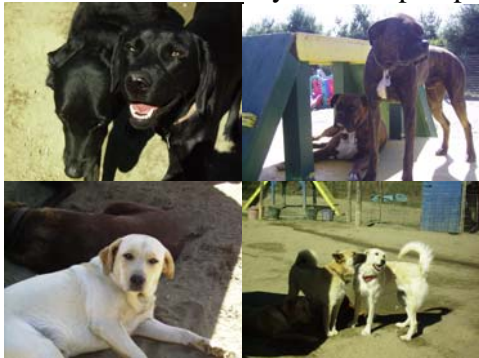


September 2007

[www.doggiedaycare.com](http://www.doggiedaycare.com)

contagious, itchy and will generally ruin your day (and possibly weeks.) So it is very important to have your vet check out any of these symptoms.

Demodectic mange is almost always curable or controllable with persistent treatment, except in rare cases with very immune suppressed individuals. Many times it is self-limiting, and the body will kick it as soon as the immune system is up to par.



## *Steve's Pool Puppy News*

HI Folks! This is Scuba Steve reporting poolside from Gulliver's. We had a blast in my goofy group in training (puppy group) this summer. We had lots of playtime out here in our cool fresh pools. I made lots of friends over the summer. Three were black lab pups: Sootie, George and Guinness. Tango's little sister Cazzie won the hearts of all of us but most of all General the Spinone puppy. I also got to meet and hang out with three fellow boxers: Tucker, Rocky and Vita Marie. We love to make big splashes!

## *Tails from the Goofy Group*

It's me, Schu! I'm VERY excited that it is September. I'm looking forward to snatching something off the grill when Mom isn't looking at the Labor Day BBQ. MMM, hope we're having steak! Things are busier than ever in the Goofy Group. As Gully mentioned we have a number of new recruits both human and canine to break in. I will be entrusting some of that responsibility to my good friends Pedro, Jake and Meeka. I of course will be starting my fall training this month. My harness is just waiting for cold weather!

## *Reminders!*

Come see us at the Shelburne Museum goes to the Dogs event on the September 16<sup>th</sup>. The bus will be available for tours, and we would love to see you!

Please remember to give us your updated phone numbers, addresses, vet and emergency contacts so that we can keep accurate information in your dog's file.

Fleas and Ticks are still out there and looking for warm, furry hosts. Make sure your dog is protected!